

ATEX Electromagnetic lock

Product reference:

MLA750-12
MLA750-24

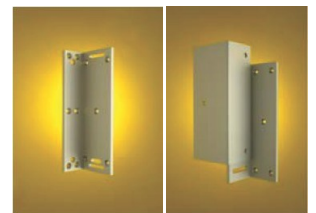
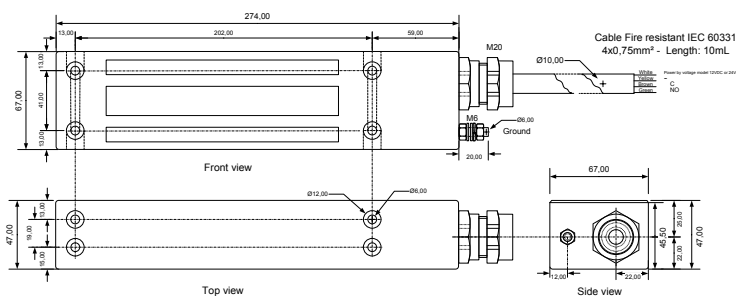


Description and use

- ➔ Meets all door locking needs, in potentially explosive (ATEX zone 1), harsh, wet or corrosive environments
- ➔ Used indoors or outdoors
- ➔ Holding force of 750 Kg with no remanence on door-opening
- ➔ Hall effect sensor monitoring output

Technical specifications

Holding force	7500 N (750 Kg)
Supply voltage	12 VDC or 24 VDC
Current consumption	12VDC: 500 mA—24VDC:250 mA
Hall effect sensor	Yes
Housing	stainless steel (316L), "L" or "Z" mounting brackets
Ingress protection	IP67, ATEX zone 1
Connection cable	Fire resistant (IEC 60331) - 4x0,75mm ² —length: 10 m
Dimension (W x H x D)	274 x 67 x 47 mm
ATEX protection	standards: EN/IEC 60079-0/7/18, EN/IEC 61241-0/1 Ex II 2 G Ex e mb II T6 / Ex II 2 D Ex tD A21 IP67 T85°C



L600

Z600

